

# Customer Information Sheet

DRAWING No.: M80-666XXX

SHEET 2 OF 2

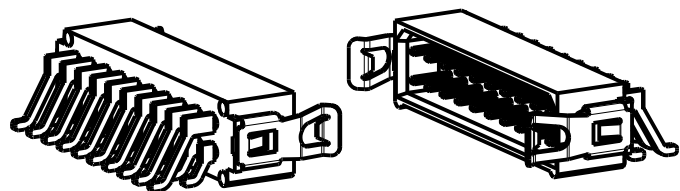
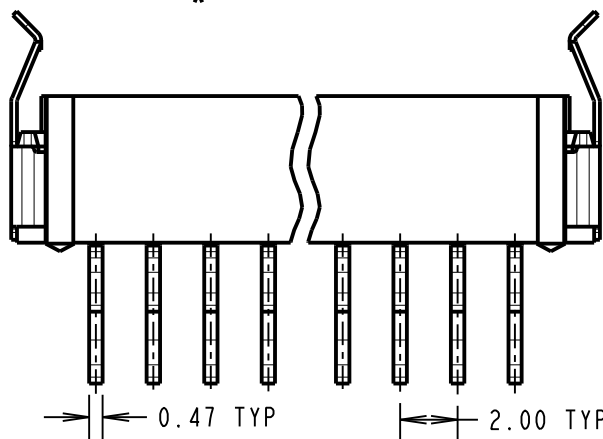
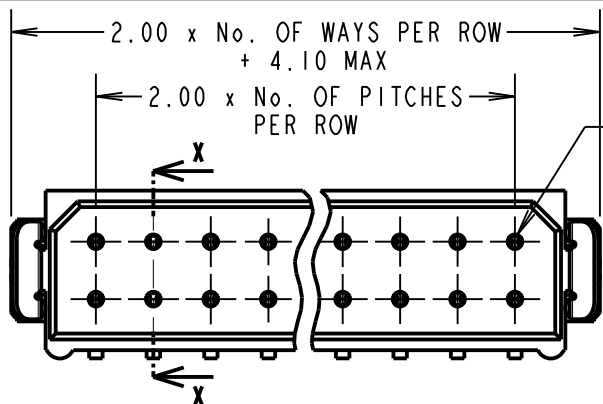
IF IN DOUBT - ASK

©

NOT TO SCALE

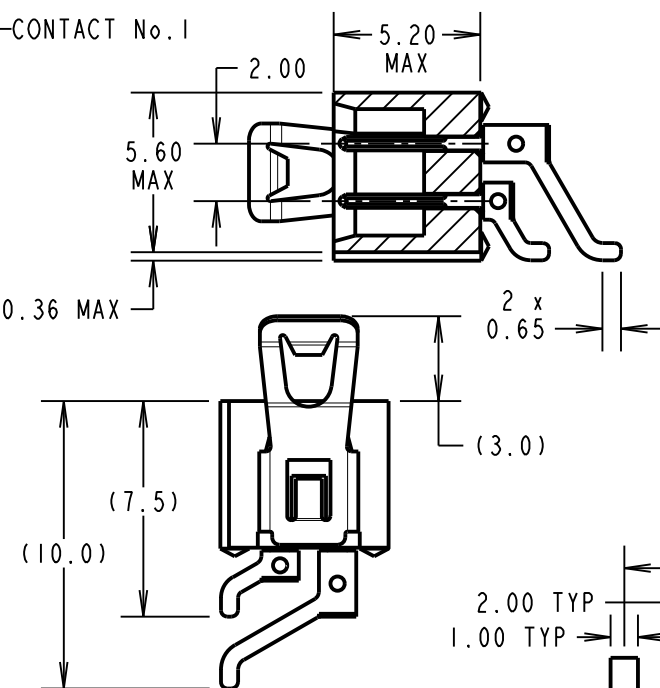
THIRD ANGLE PROJECTION

ALL DIMENSIONS IN mm



CONTACT No. 1

SECTION X-X



ORDER CODE:

**M80-666XXX**

No. OF CONTACTS  
04, 06, 08, 10, 12, 14,  
16, 18, 20, 26, 34, 44

FINISH  
22 - GOLD, 90/10 TIN/LEAD  
42 - GOLD, 100% TIN  
45 - ALL OVER GOLD

SPECIFICATIONS:

MATERIAL:  
MOULDING = GLASS-FILLED POLYAMIDE 46, UL94V-0, BLACK  
CONTACT = BRASS  
LATCH = BERYLLIUM COPPER

FINISH:

CONTACT:  
22 = 0.75µ GOLD ON CONTACT AREA,  
0.3µ 90/10 TIN/LEAD ON TAILS  
42 = 0.75µ GOLD ON CONTACT AREA,  
0.3µ 100% TIN ON TAILS  
45 = 0.75µ GOLD OVER NICKEL  
LATCH = 1.25µ NICKEL

ELECTRICAL:

CURRENT RATING AT 25°C = 3.0A MAX  
CURRENT RATING AT 85°C = 2.2A MAX  
WORKING VOLTAGE = 800V AC/DC  
VOLTAGE PROOF = 1200V AC/DC  
CONTACT RESISTANCE = 25 mΩ MAX  
INSULATION RESISTANCE = 100 MΩ MIN

MECHANICAL:

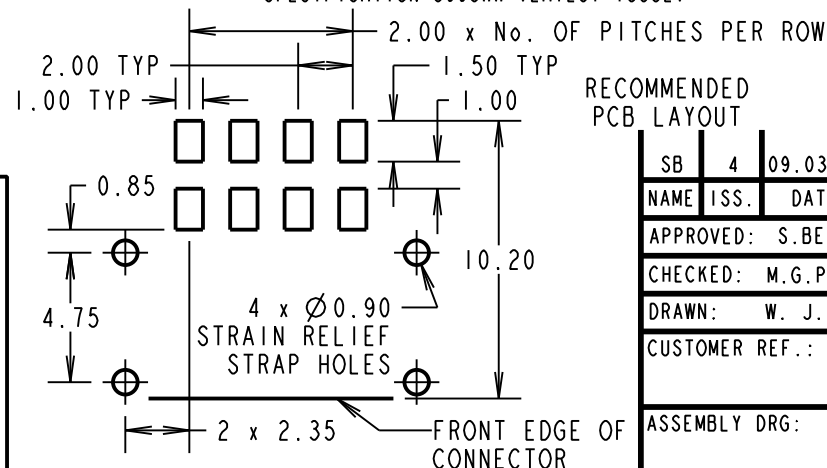
DURABILITY = 500 OPERATIONS

ENVIRONMENTAL:

TEMPERATURE RANGE = -55°C TO +125°C

PACKING:

TUBE, 2-OFF STRAIN RELIEF STRAPS PER CONNECTOR IN BAG  
FOR COMPLETE SPECIFICATION, SEE COMPONENT  
SPECIFICATION C005XX (LATEST ISSUE)



RECOMMENDED  
PCB LAYOUT

SB	4	09.03.12	11682
NAME	ISS.	DATE	C/NOTE
APPROVED: S.BENNETT			
CHECKED: M.G.PLESTED			
DRAWN: W. J. BOURNE			
CUSTOMER REF.:			
ASSEMBLY DRG:			

## HARWIN

www.harwin.com  
technical@harwin.com

THIS DRAWING AND ANY  
INFORMATION OR DESCRIPTIVE  
MATTER SET OUT HEREON ARE  
CONFIDENTIAL AND COPYRIGHT  
PROPERTY OF THE HARWIN  
GROUP AND MUST NOT BE  
DISCLOSED, LOANED, COPIED  
OR USED FOR MANUFACTURING,  
TENDERING OR FOR ANY  
OTHER PURPOSE WITHOUT  
THEIR WRITTEN PERMISSION.

TOLERANCES

X. = ±1mm  
X.X = ±0.25mm  
X.XX = ±0.10mm  
X.XXX = ±0.01mm

ANGLES = ±5°  
UNLESS STATED

MATERIAL:

SEE ABOVE

FINISH:

SEE ABOVE

S/AREA:

mm<sup>2</sup>

TITLE: STANDARD DATAMATE  
DIL HORIZONTAL SMT MALE  
ASSEMBLY (LATCHED)

DRAWING NUMBER:

**M80-666XXX**

SHT  
2 OF 2