



# ACTIVE SURGE MONITOR

## SPD Monitoring Option

Data Sheet



**ASCO Surge Protection makes it easy to monitor your electrical system by integrating its Active Surge Monitor package within its SPDs.**

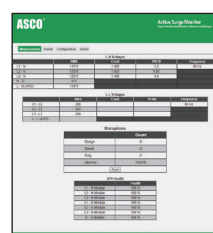
The web-based device allows the end-user real time power quality measurements, logged events and premium power protection. Understanding the severity, type and timing of the event allows you to analyze trends and ultimately better manage your electrical system.

Monitoring System Technical Specifications	
<b>Voltage</b>	<b>Phase A, B &amp; C</b>
Accuracy	±1%
Range	80V-480V
Average, Unbalance, Crest Factor	Standard
<b>Frequency</b>	<b>Standard</b>
Accuracy	±1%
Range	45-67 Hz
<b>VTHD</b>	<b>Line-to-Neutral, Line-to-Line</b>
Range	60-850 Hz
<b>Harmonics</b>	<b>Line-to-Neutral, Line-to-Line</b>
Range	Fundamental – 13th
RMS	±1%
<b>SPD Health Status</b>	<b>Percent Remaining</b>
I/O	Standard
Relay Outputs	Single Relay; x2 Configurable Form C sets
RJ-45 Port	Ethernet
<b>Events</b>	<b>Power Quality &amp; System</b>
Event Logging	8GB / 2000+ Events
Date/Time Stamp with Duration/Magnitude	Standard - All events
Surge Counter (Cat. C, B, A), Sag Counter, Swell Counter, w/ reset	Standard
Standard Events	Surge, Sag, Swell, Voltage Harmonics (VTHD), Over/Under Frequency, Protection Failure Surge events categorized and totaled as ANSI/IEEE Category C, B, or A
Display	LCD 128x64
Communications	MODBUS TCP, Ethernet, Form C
Embedded Webpage	Standard

Features
<b>Power Quality</b>
Ability to monitor voltage at every connected panel and track system anomalies such as transients, surges, swells and VTHDs
<b>Real Time Measurements</b>
Allows over 2000 events/reports to be stored for future analysis
<b>Event Logging</b>
User configurable alarm thresholds, time/date stamp, duration and magnitude of events
<b>Communications</b>
Information easily accessed through the Ethernet or MODBUS TCP communications systems
<b>Embedded Web Page</b>
Convenient access to present and past data right at the device
<b>System Analysis</b>
Manage power system with statistical summaries and reporting software
<b>LCD Display</b>
With capacitive touch buttons for navigation



### Embedded Web Pages



Active Surge Monitor						
Measurements	Events	Configuration	Alerts			
Timestamp	Event Type	Phase Affected	Duration	Severity / % Deviation		
2/15/2014 8:58:31:05	Swell	L3-L1	100ms	32%		
2/15/2014 8:58:31:06	Swell	L1	100ms	32%		
2/15/2014 8:58:32	Power On	N/A	N/A	N/A		
2/15/2014 8:23:25:405	Power Outage	N/A	N/A	N/A		
2/15/2014 14:23:25:395	Sag	L3-L1	200ms	34%		
2/15/2014 14:23:25:395	Sag	L1	200ms	33%		
2/15/2014 14:16:0:155	Swell	L3-L1	100ms	24%		
2/15/2014 14:16:0:155	Swell	L1	100ms	25%		
2/15/2014 14:16:0:2	Power On	N/A	N/A	N/A		
2/22/2014 12:18:40:005	Power Outage	N/A	N/A	N/A		